

AEROSPACE

Industrial Component Hardware



In today's aerospace industry, there is a growing demand for lightweight, sustainable, and traceable products. Sugatsune recognizes this need and takes pride in being an AS9120 Aerospace certified company. We offer a wide range of top-quality hardware, including catches, latches, cable grommets, hinges, dampers, hooks, lid stays, and parts customized for your needs.



HINGES



304B Stainless Steel
A robust stainless Steel cup hinge. Adjustable and available for overlay applications..



SFTH-05-35
A torque hinge made of stainless steel that uses friction to keep a lid or door in the desired position.



HES-Series
Family of fully adjustable concealed hinges (3/4" - 1 1/2" doors) that can hold up to 200lbs doors..



HG-YJ50
Detent hinge holds doors at 4 different positions (90°each) without secondary support.



HG-TMH
Tabletop Dual Torque Hinges features enclosure hinges designed for table extensions, & fold-down trays.



CATCHES & LATCHES



HC-85/S
Sliding Door Latches With Indicator surface mounts and has a non-handed slim design.



BCTS Stainless Steel
Made of high grade 316 Stainless steel tension catch. Available in 3 sizes.



ESN-195-3.1, MC-37
Non-magnetic push latch with strong retaining force.



MC-JMP45
Silicone sealed neodymium mag. catch. Avoids metal to metal contact.



PKL-08
Push Knob For Locking Latch Door locks when the knob is pushed in and is non-handed.



LC Flush Slam Latch Series
Door will be latched when closed. Pull paddle handle to open.

HANDLES



HKM
The Stainless Steel Folding Handle is a 90° folding handle. It can be tilted when not in use.



ALH
Extruded Aluminium Handles have anti-slip bumps along the edges, and angled surfaces help to prevent dust accumulation.



MTH
Aluminum Pipe Handles come in various sizes but can be cut to custom-fit applications.



HR
The Hatch Pull handle is concealed when not in use to stay out of the way.

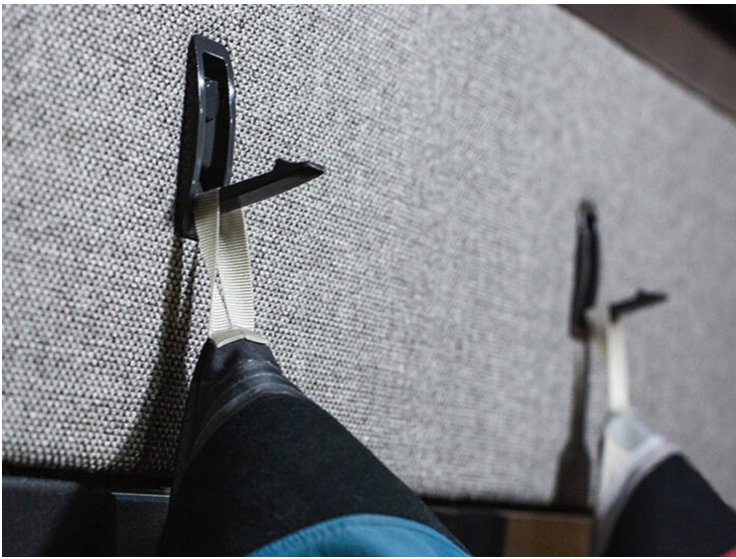
DAMPERS



UDH
Torque Dampers keeps lids/doors from slamming shut.



SRT-C2, SRN-C2
Rotary Dampers One/Two Way



HOOKS



NF-60D

Recessed Hooks are loaded to retract—ideal for vibration or shock applications.



NF-45D (SC)

Soft-close recessed hooks have an angular, modern look that many designers and end users prefer.



NF-47

Soft closing function folding hook automatically closes gradually after items on hook are removed.

LIDS & GROMMETS



SAM, SAD, 1-1212, ASD

Stainless Steel Ventilators



S445

Cable Grommets come in various sizes and are available in black or white.



AZ-GD231-HL

Rectangular stainless steel multi purpose lid w/ soft close. Available in various sizes.

LID SUPPORTS



U-3005

Multi-Angle Door Stay locks lid in multiple positions by manually sliding lock lever. Slide back lever to lock/unlock.



S-21, S-23

Locking Stay with ball catch for light weight doors. Catch automatically holds lid in opened position.



L-FS350A

Lid Stay w/ Lock can lock the lid in various positions by manually sliding the lock lever, while sliding the lever back locks/unlocks it.



L-140S

Lid Stay holds the lid or panel in the opened position. Lift the lid to release.



SLIDES



AR2

The Aluminum Slides feature a 3/4 extension and a non-handed positive stop.



AR3

The Aluminum Slides feature a full extension and a non-handed positive stop.

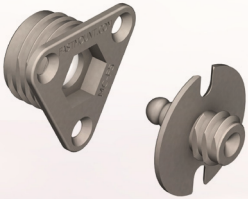
FASTMOUNT

PANEL MOUNTING SOLUTIONS



Fastmount® Low Profile Heavy Duty Clips

The Very Low Profile Range offers the least space between panel and substrate, and is suited to very thin substrates and/or panels with no special tools required for installation.



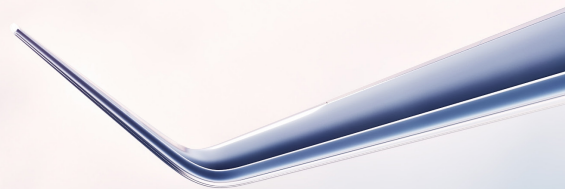
Fastmount® Metal Clips

The Metal Range is recommended for wall panel applications that require a robust hidden fixing. Self-tapping, screw or rivet and self-adhesive fix options available, with pull-out loads of 5kg or 10kg depending on female clip used.



Fastmount® Textile Clips

The Textile Range is designed for mounting soft textiles to fabrics and hard surfaces in both interior and exterior settings with clip sets holding up to a 32kg break out load.



Please visit us at www.sugatsune.com to see a comprehensive list of our products in addition to having access to downloadable CAD files.



Sugatsune America
18101 Savarona Way,
Carson, CA 90746



sugatsune.com

1.888.557.5267